

Fall 2017

# Lake State Railway

## 25 Years of Service

The Turntable



### FROM THE PRESIDENT

*Safety First*

### BUSINESS DEVELOPMENT

*Fall & Grain*

### VETERANS DAY TRIBUTE

### SANTA TRAIN CHARITABLE EVENT





## From the President...



**SAFETY FIRST!** Throughout my entire career, this motto has been around and used by the rail industry as a tool to remind its work force to think before doing. In nearly everything we do, there exists an element of risk. People have been severely

injured walking down the street, riding in a car, playing sports, sitting in a chair (more later). In other scenarios, they have died from eating, taking prescribed medication even with recommended dosages, and from dieting and /or exercising. The point is that risk exists all around us every day in our ordinary and routine lives as well as in unusual and extraordinary circumstances. Sometimes, our every day tasks become so routine and habitual we become complacent about the dangers when even one small step is overlooked.

The rail industry has worked hard to help our employees learn how to avoid risks. Job Briefings, rules compliance, training, training, and more training. You probably get the point that training plays a major role in minimizing accidents and ensuring the safety of our workforce. Our goal is to never have an accident/incident especially one that results in an injury or worse.

At Lake State Railway Company, we are constantly working to increase our safety awareness by improving and increasing training, testing (classroom and field) and developing a safety focused workforce. A few steps LSRC has taken to ensure that we continue to improve our safety record are: The establishment of a training center, the employment of a full time safety and training manager, volunteering to have a safety assessment done by the American Shortline and Re-

gional Railroads Association's Safety Institute, and formation of the LSRC Safety & Health Committee.

Lake State was recently recognized for its safety efforts by earning a Jake Jacobson Award. This is a prestigious award earned by having a safety record that stands out amongst our peers. While we are proud of that accomplishment, some recent incidents at LSRC are quick reminders of how hard it is to remain on course as a leader in safety.

One of the encour-

aging things learned from our safety audit was that our employees in the field feel the same as the management team when it comes to where we are with the development of a safety culture. It has been proven that the safest railroads have built a safety culture that is supported from top to bottom. It takes the willingness to talk openly to peers, subordinates and managers about their safety habits. Ignoring rules violations is unacceptable and may result in a situation that affects more than just the individual who violated the rule.

Safety within the work place is not only important for employees, it also impacts our customers and public communities as well.

Recently, Lake State participated in The National Rail Safety Week - Officer on a Train program. This program was set up with a State Police Officer riding a train with the Locomotive Engineer while another officer rides ahead in a squad car to observe vehicular law compliance and safety at rail crossings. No citations were given on this go around.

At LSRC, the safety of our employees, customers and



communities is of the utmost importance and we will continue to build on quality training and addressing the needs of the workforce, whether it be tools, specific training or improved infrastructure all in an effort to reach the goal of zero accidents.

For those who remember earlier in the article, my comment on "more later", a year ago I watched a documentary about a Park Ranger who had been struck by lightning seven times. One of which happened when he was sitting in his recliner in his home. How's that for risk in every day life? He lived to tell the incredible story. Not everyone is that lucky.

—John Rickoff  
President & CEO

### Inside this issue

From the President .....	2
Business Development.....	3
Veterans Tribute.....	4
Fun Fact/Trivia.....	5
Safety .....	5
Customer Spotlight .....	6
Santa Train .....	7
Employee Spotlight .....	8

### LSRC Upcoming Events

- Santa Train ..... 12/08
- Christmas Party..... 12/09



## Business Development

Fall is a special time of year for Michiganders. It means apple cider and doughnuts, fall colors in northern Michigan, hunting season for many, but the biggest impact in our service area is the fall harvest. Michigan agriculture is a diverse industry, producing over 300 different commodities. In fact, Michigan is second only to California in the diversity of agricultural products grown. Much of the agricultural production is consumed outside of Michigan and even outside of North America.

The rail network is a vital link in connecting over 50,000 Michigan farms with the national and international marketplace. Lake State Railway handles approximately 1.25 million tons of flour, wheat, soy beans, corn, black beans, sugar, and other agricultural products annually. These agricultural products travel in unit trains to export terminals, boxcars to Mexico, and in hop-



per cars to feed mills in the southeast. LSRC has been making continual investment in rolling stock and infrastructure to help handle Michigan products. The investments include two 6,000+ foot sidings, with yard air for expediting unit train interchange with our connecting carriers, 100 ton 50' and 60' boxcars for edible beans, and modern 286K 4750 cubic capacity covered hoppers. LSRC's investments are a reflection of investments being made by our customers. The Andersons in Standish has added an additional high-capacity storage silo, Gavilon in Bay City/Saginaw has made significant investments to improve their rail loadouts, and we are welcoming a new agriculture customer in Saginaw this fall.

Lake State is working with CSX to expand the Express Grain program in Michigan. LSRC has been supporting the Express program at two origins since 2015, and hopes to have origins located on partner shortlines included in the program this harvest cycle. The Express Grain program improves efficiency and pushes asset utilization for the railroads and customers with private railcars. Agricultural commodities are a large portion of LSRC's traffic mix and we are excited to see growth and continued strengthening in partnerships with our connecting carriers to help support Michigan Agriculture.

- Mike Stickel  
EVP & Chief Operating Officer



## 4th Qtr Birthdays

Ed Currie.....	10/07
Zachary Valeck.....	10/11
Mark Eickholt .....	10/18
Raymond Stomberski.....	10/18
Melissa Podgorski .....	10/20
Richard Hanson.....	10/23
Richard Ruse.....	11/06
Elliott Hubbard .....	11/15
Sandy Miller .....	11/18
Derrick Talaga.....	11/18
Louie Tremble.....	11/25
Brian Benson .....	12/03
Denver Hine.....	12/03
John Bolesky.....	12/06
Allen Gooch .....	12/09
Travis Smith.....	12/09
Trista Wolgast.....	12/16
Joshua Miller .....	12/16
Joe DeWaele.....	12/19
Alec McLennan .....	12/20
Kevin Podgorniak.....	12/23
Michael Davis .....	12/27

## 4th Qtr Work Anniversaries

Brian Balenda .....	18 Years
Les Erickson .....	16 Years
Jack Laurin.....	12 Years
Gregg Campbell .....	12 Years
Steven Rainey .....	12 Years
Louie Tremble.....	12 Years
Rick Krajniak.....	12 Years
Christopher Copp.....	7 Years
David Mcknight.....	7 Years
Dora Fitzgerald .....	3 Years
Brandan Pennington .....	2 Years
Quentin Johnson.....	1 Year
Derek Talaga.....	1 Year
Michael Miller .....	1 Year
Richard Wittkopp.....	1 Year
Joe DeWaele.....	1 Year
Alec McLennan .....	1 Year
Shasta Duffey .....	1 Year



# Honoring our Veterans

*In honor of Veterans Day, November 11th, Lake State would like to take this opportunity to acknowledge and thank our United States Veterans and current military personnel. We are truly grateful for your service to our country and extremely proud to have you on the Lake State team.*



Brandon Pennington  
Sergeant  
U.S. Air Force and U.S. Army  
2001-2013  
Buckley AFB, CO/Fort Drum, NY/Fort  
Campbell, KY/Fort Lewis, WA



Jack K. Laurin  
Sergeant  
U.S. Marine Corps  
2002-2008  
Camp Pendleton, CA/Camp Lejuene, NC/  
Camp Solomon, Iraq/Al Taqa ddam, Iraq/  
Camp Falluja, Iraq, MCRC Battle Creek, MI



Cody A. Jellison  
E-4 HM3 (Corpsman)  
U.S. Navy  
2011-2013  
Naval Hospital , Camp Lejuene, NC



Joshua Johnson  
E-6 PO1  
U.S. Navy Seabees  
2002-present  
Gulfport, MS/Selfridge AFB/Kuwait/  
Afghanistan



Darrell Collins  
Private 1st Class  
U.S. Army  
1985-1987  
Fort Jackson, SC



Kevin Filarski  
SP-4  
U.S. Army  
1984-1987  
Fort Stewart, GA



David Murringer  
Sergeant  
U.S. Marine Corps  
1989-1997  
Yokosuka, Japan/Camp Lejuene, NC/  
Rodman Naval Base Panama City, Panama



Michael O'Sullivan  
Sergeant  
U.S. Marine Corps  
1975-1980  
Parris Island, SC/Okinawa, Japan/Camp  
Lejuene, NC/El Toro, CA



Ed Currie  
SR ARM E-4  
U.S. Air Force  
1991-1997  
Frankfurt, Germany



Quinton Huff  
E-5 AM2  
U.S. Navy  
2000-2006  
Virginia Beach, VA/Lemoore, CA



Gregg Campbell  
E-5 AT2  
U.S. Navy  
1981-1985  
Hawaii/Philippines/Okinawa, Japan/  
Diego Garcia/Mtn. View, CA/Sub Base  
Pearl Harbor, HI



Travis Smith  
E-4 AD3  
U.S. Navy  
2013-2017  
San Diego, CA

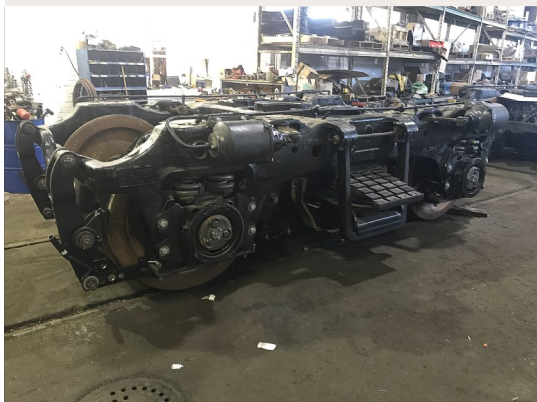


LSRC has purchased a set of new locomotive jacks for the Saginaw Roundhouse. These new jacks will replace an older set that served LSRC for many years. The new jacks are rated at 50 tons each and will allow LSRC to lift locomotives up to 400,000 lbs off their trucks (Wheel



Locomotive Jack

Sets) for servicing of the trucks, wheels and traction motors. LSRC has purchased an extra pair of six axle trucks and an extra pair of four axle Blomberg trucks so that a rebuild program can progress. The extra sets allow for preventative maintenance on the locomotive fleet and will reduce down time. The photo below shows rebuilt Blomberg B four axle trucks completed this summer by LSRC mechanical forces in Saginaw. They were originally purchased as bare frames, were thoroughly inspected, and have all new pins, bushings, brake rigging and traction motor combos.



# LSRC LESS SAFETY REALLY COUNT

## Winter is on its Way

Dressing in layers with warm coats, boots, hats and gloves are essential to staying warm during the brutal winter months, but here are few specific tips you may not have heard:

### First Layer:

Long Underwear – Long underwear should fit tightly against the body and be made of a wicking material to keep moisture away from your skin. Try synthetic fabrics such as polypropylene and stay away from cotton fabric because that holds water against your body.

### Mid Layer:

Mid layers are very important because they work to absorb the moisture out of your long underwear and evaporate it into the environment. Again, it is best to use synthetic fabric but wool is a great substitute. Pay close attention to the fit, as the mid layers work by trapping air and preventing it from circulating and carrying away your body heat. This layer will be your daily pants and shirt. Make sure they are not too baggy.

### Insulation Layer:

This layer will be a warm coat with several inches of loft or thickness. Thickness is warmth. Using a synthetic insulation is recommended for working in potential cold/wet conditions.

### Shell Layer:

The most important layer other than the long underwear layer is this wind shell layer. Studies conducted by Recreational Equipment Co-Op show that in still air, wind shells worn over any garment can add up to 25 degrees of warmth. In windy conditions, wind shells can increase warmth by 50 degrees or more. Find a soft garment made of treated fabric that stops wind and water but has little or no insulation of its own. This is useful lightweight protection to pair with thick insulation layers.

- Hat or head band that covers the ears is key
- Hand and feet warmers (purchase at local stores)
- Wool socks
- Wool-lined gloves
- A non-cotton scarf for wind protection on your face.
- Stay hydrated
- Eat plenty of calories (now you have an excuse)

<http://www.horwitzlaw.com/blog/horwitz-hor-witz-and-associates/winter-tips-for-staying-warm-while-working-outdoors/>

### FUN FACT:

The last passenger train to operate on LSRC tracks was operated by the former owner of LSRC's Mackinaw Subdivision, the New York Central RR. Known as the *Northerner*, this summer-only weekend train operated from Detroit to Mackinaw City and ceased operation on Sept. 2<sup>nd</sup> 1963. The last daily year-round train, known as the *Timberliner*, ceased operation one year earlier on the same route.





## Customer Spotlight



Star of the West in Frankenmuth, MI has a history that dates back to 1846 when a wooden dam was constructed for \$1,000 (which still survives today). Not long after the wooden dam was put into place a flour mill was erected for \$3,000 along with a waterwheel to power the flour mill. During the past 150 years, they have grown to be the 10<sup>th</sup> largest wheat flour miller in the country.

Star of the West has benefited from long term employee experience in which some have spent sixty years of their life dedicated to the

*"Proud Partnership" - LSRC*

growth and innovation while ensuring an exceptional customer experience that so many enjoy today.

While providing soft wheat flour and wheat based cereal ingredients to the food industry, Star of the West continues to utilize the strong long-term relationship and partnership with Lake State Railway to ensure their customers needs are met on a consistent and cost-effective basis.

Lake State railway is pleased to work with Star of the West in providing a food grade compliant facility with customized rail service plans. With proper focus and strong partnerships, Star of the West will remain one of the largest millers in the United States.



## Tribute



It is with deep sadness that we say goodbye to a member of our Lake State family who passed away unexpectedly on August 21, 2017. Christopher Palumbo was an incredible engineer/conductor and a great friend. His work ethic and rail knowledge was second to none and earned him the nickname "The Switching Machine". February 17th, 2017 marked his 25th year with Lake State Railway making him an original employee since the company's establishment in 1992. In honor of Chris' loyalty and dedication, Lake State officially named a siding after him near his home and on-duty point in Tawas, MI. Chris was truly one of the finest people and he will be sorely missed.





*Lake State Railway invites our customers and friends to join us in giving back to the community. This year LSRC is hosting a Santa Train Charitable Event in Grayling, Michigan to benefit The U.S. Marine Corps Toys for Tots. Bring the kids out to see Santa and enjoy some cookies and cocoa. Volunteers and donations are welcome.*

*For more information please call 989-393-9824.*



# **Lake State Railway**

## **SANTA TRAIN**

### **Charitable Event**

**When: December 8, 2017**

**Time: 4 pm – 7 pm**

**Where: Historical Museum/Depot**

97 East Michigan Avenue, Grayling, MI 49738

**Santa is coming to town...on a train!!!**

Drop off boxes will be available for optional toy donations.

Early drop off locations: Blarney Stone Broadcasting, Inc.

6514 Old Lake Road, Grayling, MI 49738

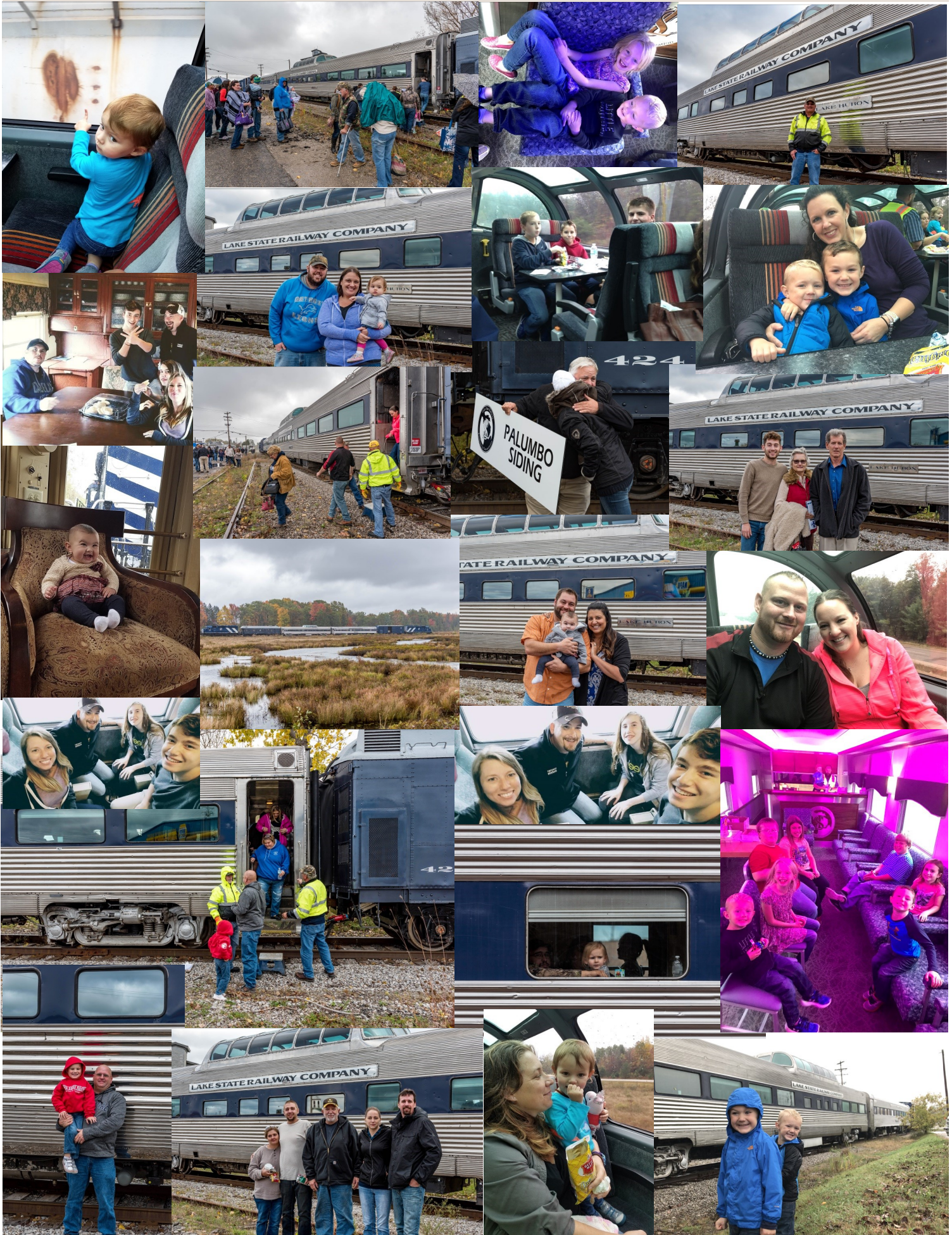
Lake State Railway Company

750 N. Washington Ave, Saginaw, MI 48607





# Employee Appreciation—Family Autumn Train Ride





## Employee Spotlight

### Mark Eickholt— Machinist

Mark Eickholt has been a machinist/locomotive mechanic with Lake State for the last 4 years and also currently serves as the Vice Chairman for LSRC's Health & Safety Committee. Mark came to LSRC with a 16-year background in car and tractor electronics, home audio and telephone intercom wiring and set-up, and video installs in motor coaches. Mark says he enjoys working on anything with moving parts and according to his co-workers, is always willing to help anyone fix their vehicle when he has time. Mark was born in Saginaw and at the age of 5, he and his family moved to Bay City where he graduated from Western High School and where he continues to reside today. Mark said he appreciates Lake State for its continuous investment in improving the standards of the old Roundhouse (locomotive shop) so he and his co-workers can keep the locomotives running safely. Mark always has a great work ethic and attitude. His colleagues say he's a big jokester and can always lighten the mood.

When Mark is not at work, he's busy spending time with his sweet daughter Emily who is 6 years old and in the 1st grade. They enjoy bike rides together and visiting water-parks. On Thursday nights, Mark plays on a pool league and when he gets any extra free time, which isn't often, he enjoys going fishing. Mark has been a loyal and dedicated asset to Lake State with his great work ethic and positive attitude. We are grateful to have him on our team.



## Congratulations

### Meet Harper Lee



Proud parents Dustin Eno (Train Service) and Jessica Erickson welcomed a baby girl, Harper Lee, on July 7, 2017 weighing in at 7lbs. 5 oz. Grandpa Jesse Erickson (Train service) is over the moon.



### Meet Remington Jeanette



Proud parents Joshua Miller (Rail Car Mechanic) and Jennifer Gittins welcomed a baby girl, Remington Jeanette, on September 19, 2017 weighing in at 6lbs. 13 oz.



## Welcome

**We want to give a warm welcome to our newest team members who joined Lake State July-September 2017. Welcome aboard! We look forward to all the great knowledge and workmanship you will bring to LSRC.**

Travis Smith	- 07/05/17 Locomotive Mechanic
Christopher Smith	- 07/17/17 Train Service
Dustin Eno	- 08/07/17 Train Service
Cody Jellison	- 08/28/17 Train Service
Denver Hine	- 09/11/17 Train Service





# ***"The Turntable"*** - Lake State Railway Company's official newsletter

## Lake State Railway Company

750 N. Washington Ave.  
Saginaw, MI 48607

Phone: 989-393-9800  
Fax: 989-757-2134  
E-mail: [info@lsrc.com](mailto:info@lsrc.com)

PLEASE  
PLACE  
STAMP  
HERE



Mailing Address Line 1  
Mailing Address Line 2  
Mailing Address Line 3  
Mailing Address Line 4  
Mailing Address Line 5

## 2017 FALL EMPLOYEE APPRECIATION TRAIN RIDE



St. Helen, Michigan  
Photo Courtesy of Kevin Burkholder