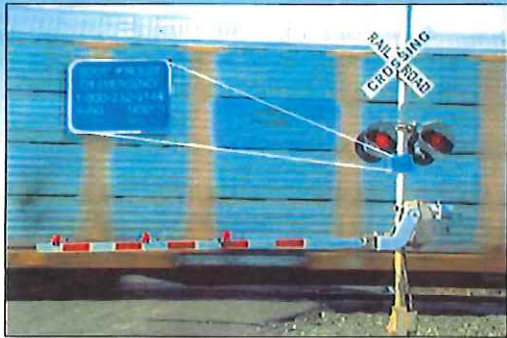


HIGHWAY-RAIL GRADE CROSSINGS

EMERGENCY NOTIFICATION SYSTEM (ENS)

Get HELP! Use the Blue ENS Sign



Keeping Railroads and the Public Safe

The mission of the Federal Railroad Administration (FRA) is to enable the safe, reliable and efficient movement of people and goods for a strong America, now and in the future.



U.S. Department of Transportation
Federal Railroad Administration

In Case of Emergency

- **Locate** the blue and white Emergency Notification System (ENS) sign at the grade crossing.
- **Call for help!** Call the railroad's emergency contact number listed on the blue sign.
- **Communicate** your location, by providing the identification number (see below) and state the nature of the emergency to the dispatcher.

The ENS sign includes:



- 1 Each railroad's emergency contact number,
- 2 The U.S. Department of Transportation (USDOT) National Crossing Inventory Number, which identifies the exact location of the crossing to the railroads.

Emergencies and safety concerns at the grade crossing should be reported by using the information on the ENS sign.

For more information visit us at
www.fra.dot.gov



Connect with us USDOTFRA



ABOUT THE FEDERAL RAILROAD ADMINISTRATION (FRA)

Our mission is to enable the safe, reliable and efficient movement of people and goods for a strong America, now and in the future.

Get to Know the FRA

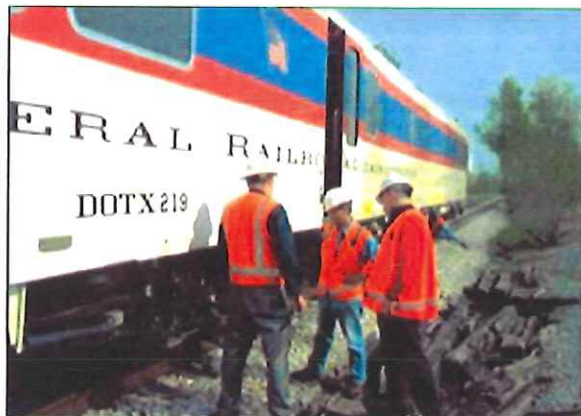
- Created in 1966 as part of The Department of Transportation Act
- One of ten agencies that make up USDOT
- Led by an administrator, appointed by the President of the United States and confirmed by the United States Senate. FRA has eight regional offices across the nation
- Employs a diverse workforce to accomplish its mission

Protecting People and Railroads

The FRA is the chief safety regulator for all passenger and freight railroads nationwide. We accomplish our mission through:

- A rigorous oversight and inspection program based on strategic use of data
- Advancing proactive approaches for early identification and mitigation of risk
- Capital investments and a robust research and development program

The FRA advances market-based rail improvements. Today, we manage a portfolio that includes grants and loans, laying a solid foundation of sustainable, long-term rail improvements.



Emergency Notification System

To improve highway-rail crossing safety, the FRA now requires each railroad to have an Emergency Notification System (ENS), allowing emergency response center staff to identify crossing locations and railroad contacts for reporting safety problems and emergency situations.

- Look for a blue-and-white emergency notification sign.
- The ENS sign should be posted near the crossing and clearly visible. It includes the name of the railroad, the railroad's emergency contact number, and the USDOT National Crossing Inventory Number.
- **Using the information on the ENS sign is the quickest way to notify the railroad.**

A USDOT National Crossing Inventory Number is a unique number that is assigned to each grade crossing and can be used to obtain valuable information.

The National Law Enforcement Terminal Systems (NLETS) has joined the FRA to make a mirror image of FRA's highway-rail grade crossing database. Using the USDOT National Crossing Inventory Number, and NLETS will provide the first responder's agency instant access to FRA's database.

More Resources

FRA has created the "Rail Safety for Emergency Responders" informational video series. Visit <https://www.fra.dot.gov/Page/P0850> or contact Michail Grizkewitsch at michail.grizkewitsch@dot.gov for further information.